



COBATEST
NETWORK

HIV testing trends and positive diagnosis among immigrants in Europe and Central Asia vs. native-born: A COBATEST Network, 2017-2023

M.Gogishvili Asanishvili, J.Aceiton Cardona, M.Alarcon Gutierrez, J.Casabona Barbara, L.Fernández López, and COBATEST Network Study Group



281 million people,
or 3.6% of the global
population, live
outside their country
of birth.¹



¹International Organization for Migration (IOM). *World Migration Report 2020*. Geneva: IOM, 2020. Available at: <https://publications.iom.int/books/world-migration-report-2020>

HIV Disparity among Immigrants in Europe

- More than half of the EU members identify their immigrant population as a group disproportionately affected by HIV or recognize them as a key population when addressing HIV prevention and treatment²
- Out of 22,995 newly diagnosed HIV cases reported by the 30 EU/EEA countries in 2022, 11,103 or 49% were among immigrants.³
- Immigrants are disproportionately affected among key sub-populations (PWUDs, MSM, sex workers) at increased risk of HIV infection, and compared to native-born population.³



²European Centre for Disease Prevention and Control (ECDC). (2023). *HIV and migrants: Monitoring implementation of the Dublin Declaration on partnership to fight HIV/AIDS in Europe and Central Asia: 2022 progress report*.

³European Centre for Disease Prevention and Control (ECDC). (2023). *HIV/AIDS surveillance in Europe 2023 – 2022 data*. Stockholm: ECDC.

COBATEST Network

The COBATEST is a network of 152 Community-Based Voluntary and Counseling and Testing Service (CBVCT) centers in 29 European and 2 Central Asian countries.



Coordinated by:



Centre d'Estudis Epidemiològics
sobre les Infeccions de Transmissió
Sexual i Sida de Catalunya

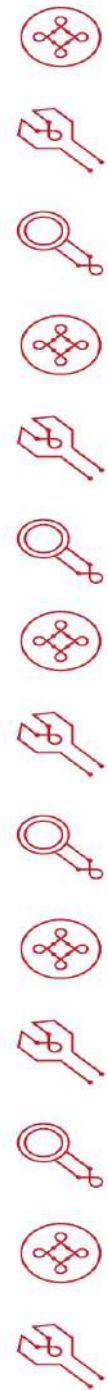
Methods

Objective

Describe HIV-testing trends and examine the prevalence of HIV positive diagnosis among immigrants in Europe and Central Asia (ECA) compared with native-born individuals from 2017 to 2023.

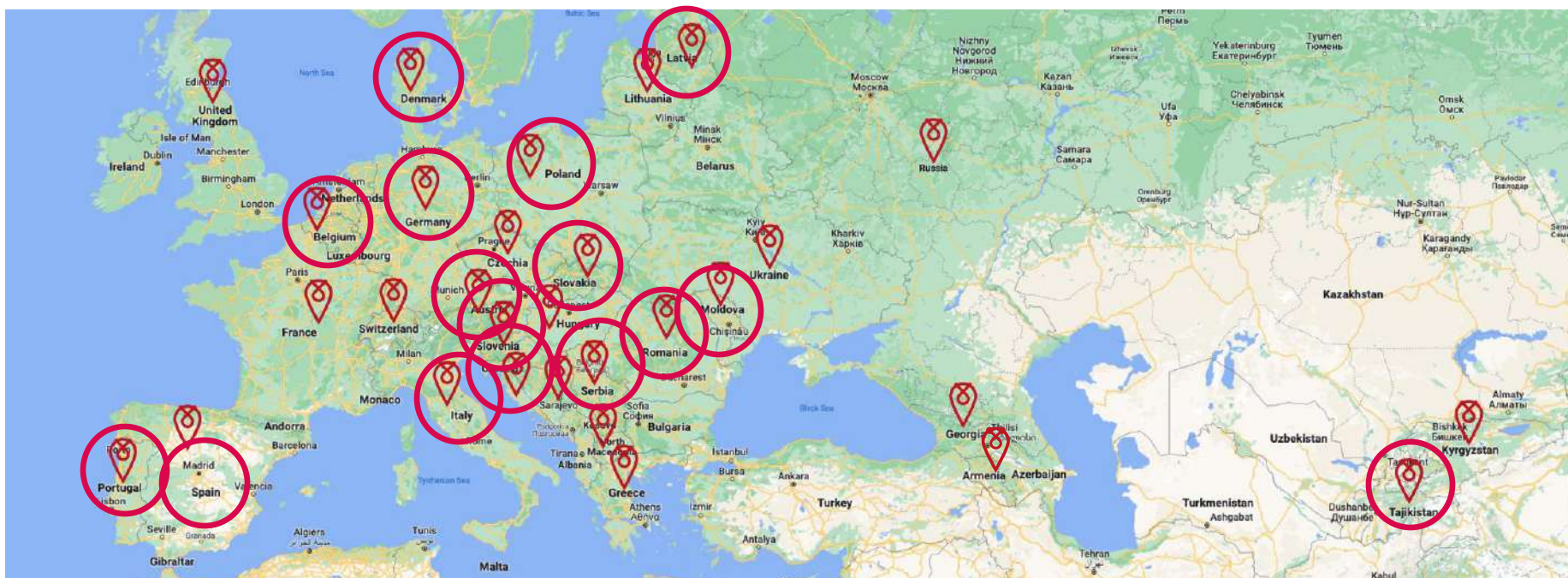
Immigrant

Person who was born abroad.



COBATEST
NETWORK

Participating COBATEST Network members



Log-binomial multivariable regression models were fitted to compare the prevalence ratio of HIV positive diagnosis among **immigrants and native-born individuals across the seven years**, adjusting for covariates

91 centers
(Disaggregated data)

Descriptive analysis
(HIV testing prevalence)
by: gender, key-population groups, HIV diagnosis and the respective seven years, **stratified** by immigrants and native-born individuals

37
(Aggregated data)

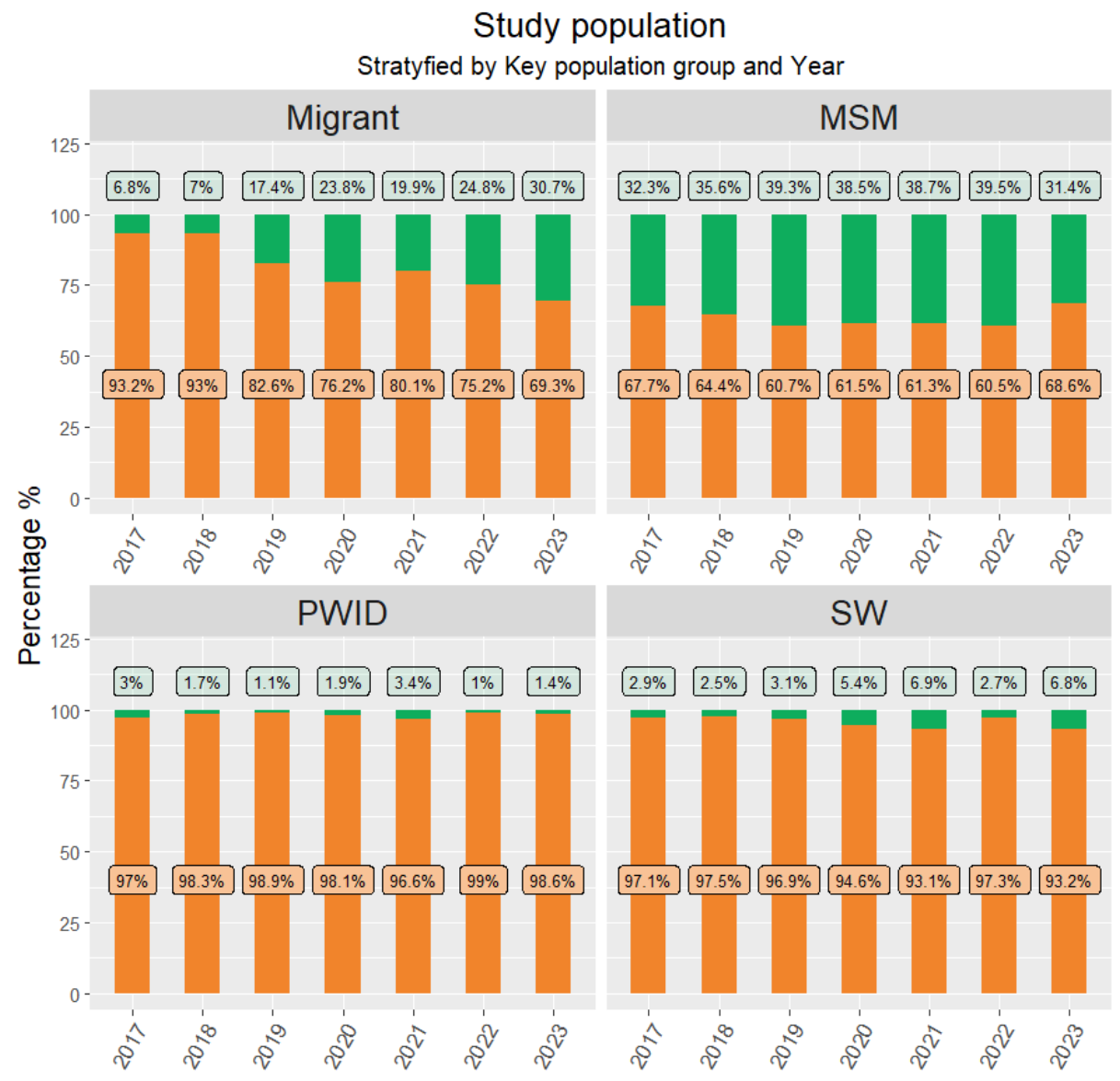
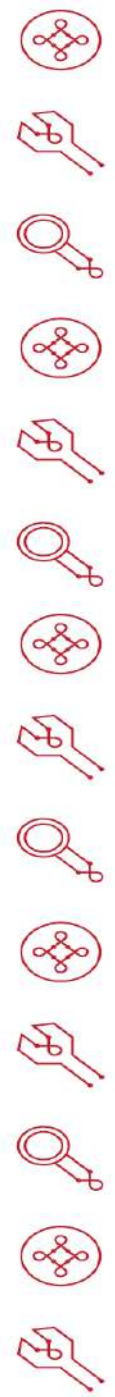
119
COBATEST
members

Results

Table 1. Characteristics of the total population* by origin status

	Total sample % (N=743811)	Immigrant % (N=155033)	Native-born % (N=588778)	P value
Sex				<0.001
Men	66.70%	60.40%	68.40%	
Women	31.80%	36.80%	30.50%	
Transgender	0.80%	1.90%	0.50%	
Missing	0.60%	0.90%	0.50%	
Age category				<0.001
< 25	25.50%	21.70%	26.50%	
>= 25	65.90%	77%	63%	
Missing	8.60%	1.30%	10.50%	
HIV result				<0.001
Positive	1.10%	1.40%	1%	
Negative	98.90%	98.60%	99%	
Missing	0 (0%)	0%	0%	

*Total study population includes both disaggregated and aggregated data.

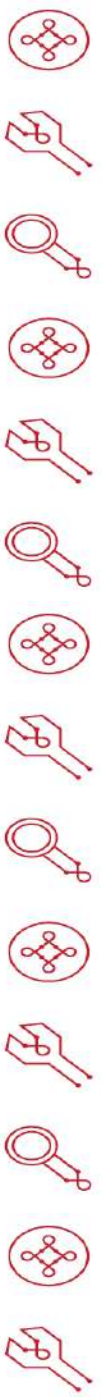


Total study population
N = 743,811
2017n= 51,799
2018n= 69,137
2019n= 129,469
2020n= 89,578
2021n= 128,425
2022n= 124,120
2023n= 151,283

*Total study population includes both disaggregated and aggregated data.



HIV Testing Trends Over Time: Immigrants vs. Native-born

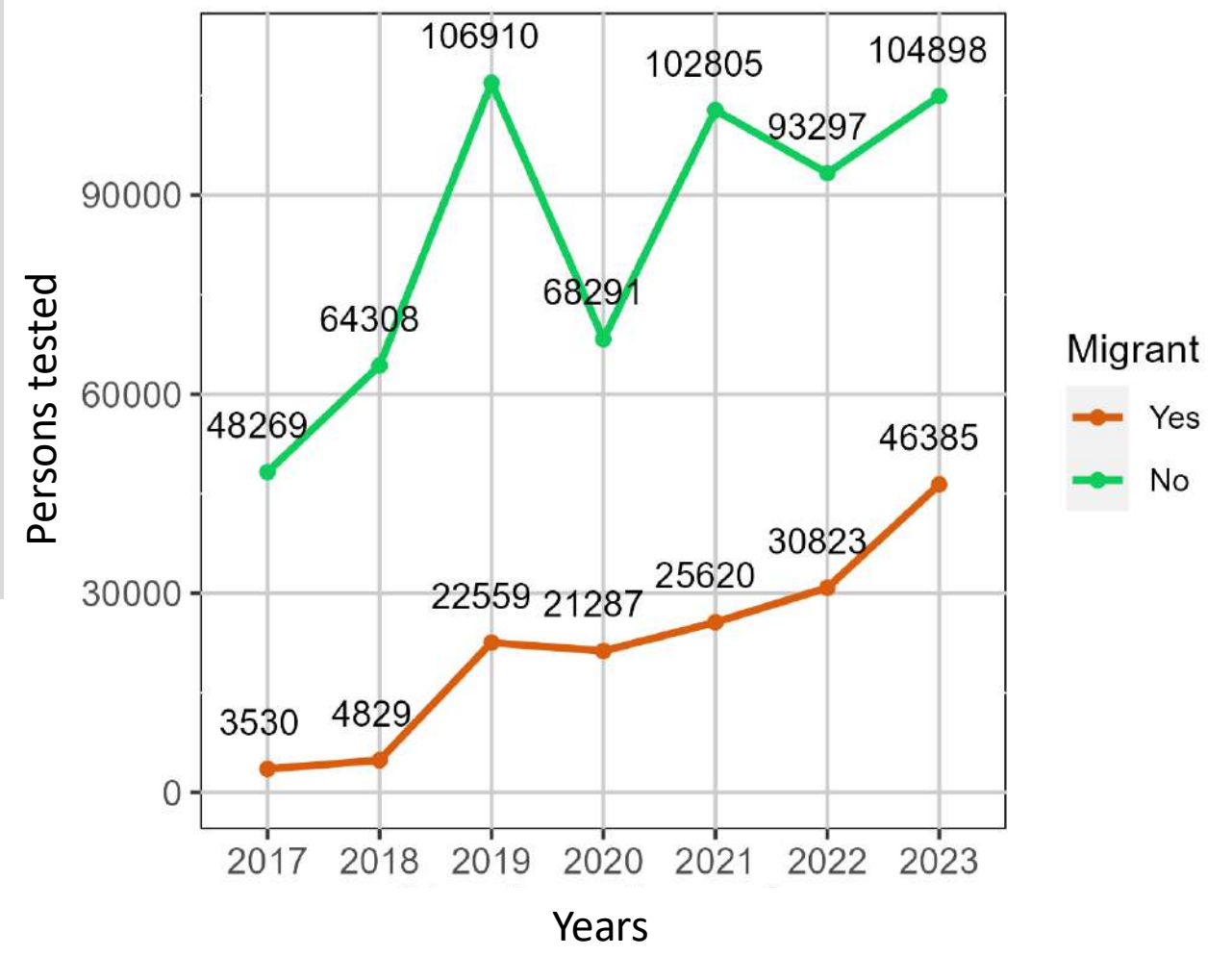


Total study population
N = 743,811

Total immigrants tested
N = 155,033 (20.8%)

Total native-born tested
N = 588,778 (79.1%)

*Total study population includes both disaggregated and aggregated data.



% change among immigrant testing over the years:

2017 - 2018 Δ 36.7%

2018 - 2019 Δ 367.1%

2019 - 2020 ∇ 5.64%

2020 - 2021 Δ 20.4%

2021 - 2022 Δ 20.3%

2022 - 2023 Δ 50.5%

% change among native-born testing over the years:

2017 - 2018 Δ 33.2%

2018 - 2019 Δ 66.2%

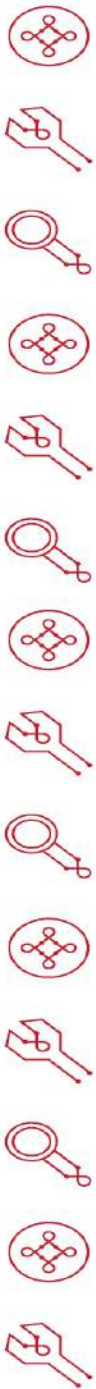
2019 - 2020 ∇ 36.1%

2020 - 2021 Δ 50.6%

2021 - 2022 Δ 9.0%

2022 - 2023 ∇ 12.4%

HIV Diagnoses Over the Years by Origin Status

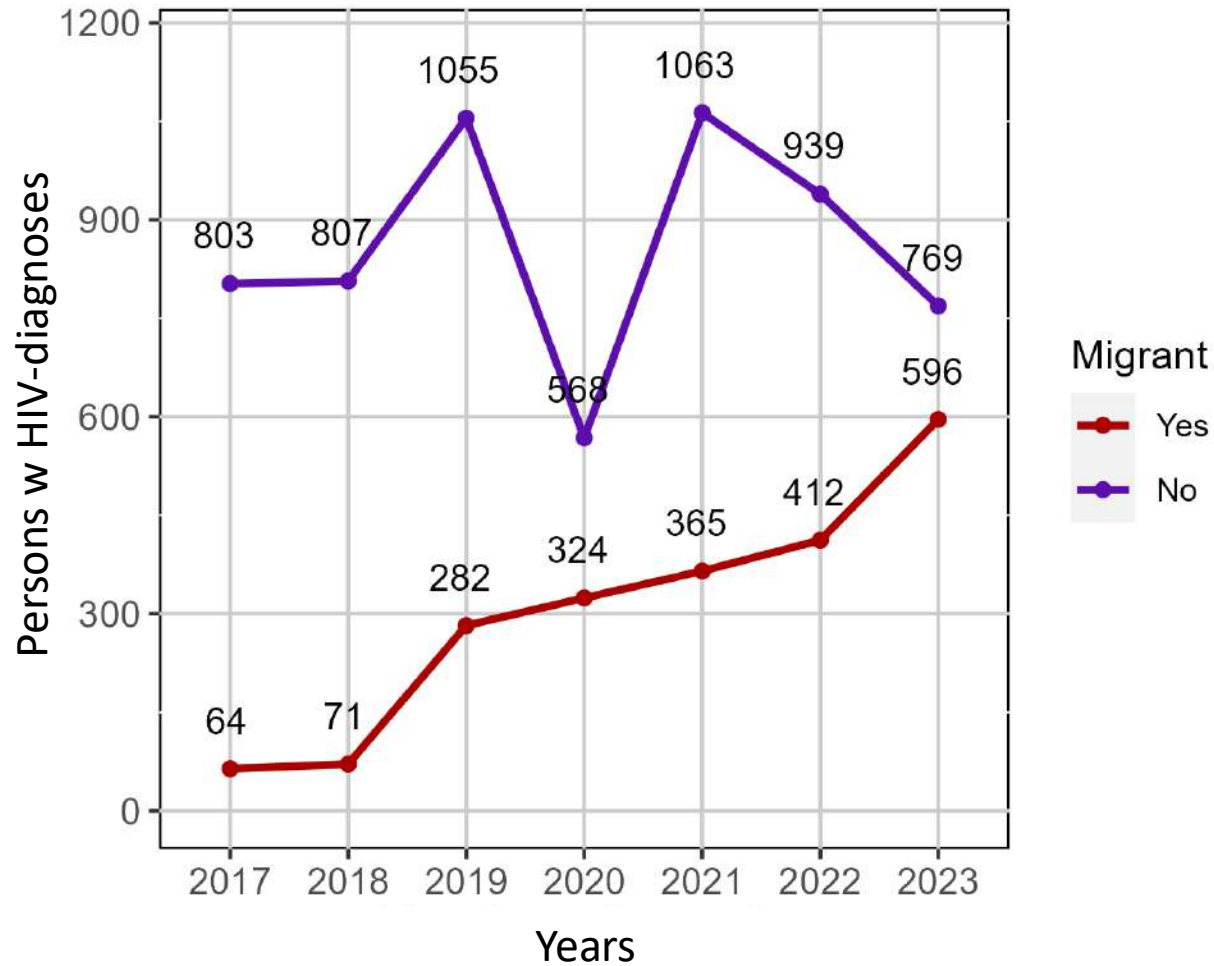


Total HIV-positive diagnoses
N = 8118

immigrants with HIV-positive diagnoses
N = 2114 (26.0%)

Native-born with HIV-positive diagnoses
N = 6004 (73.9%)

*Total study population includes both disaggregated and aggregated data.



% change among Immigrants with HIV-positive diagnoses over the years:

2017 - 2018 Δ 10.9%

2018 - 2019 Δ 297.1%

2019 - 2020 Δ 14.8%

2020 - 2021 Δ 12.6%

2021 - 2022 Δ 12.8%

2022 - 2023 Δ 44.6%

% change among native-born with HIV-positive diagnoses over the years:

2017 - 2018 Δ 0.50%

2018 - 2019 Δ 30.7%

2019 - 2020 ∇ 46.1%

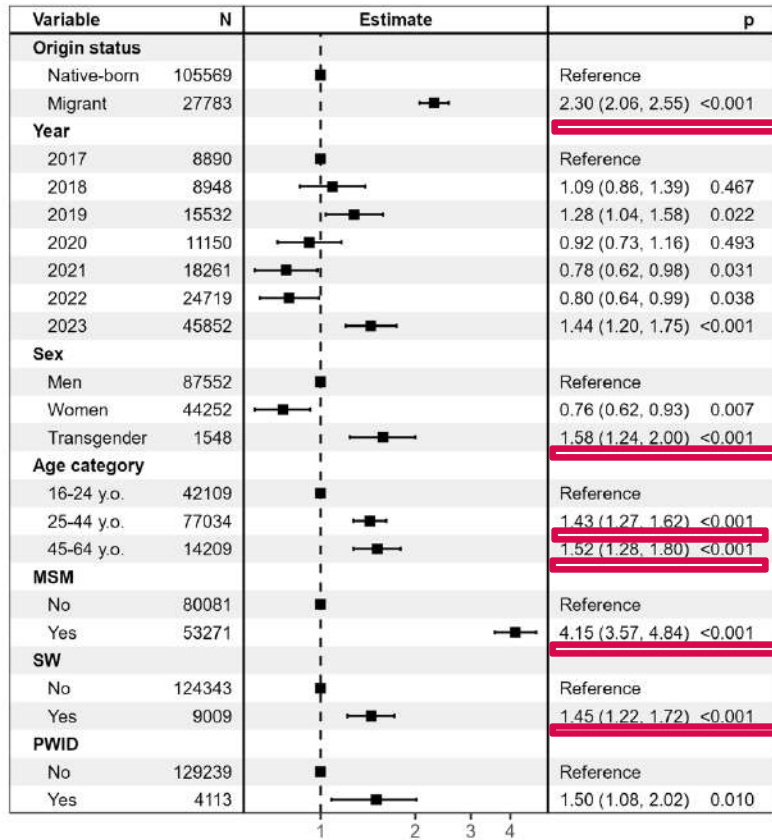
2020 - 2021 Δ 87.1%

2021 - 2022 ∇ 11.6%

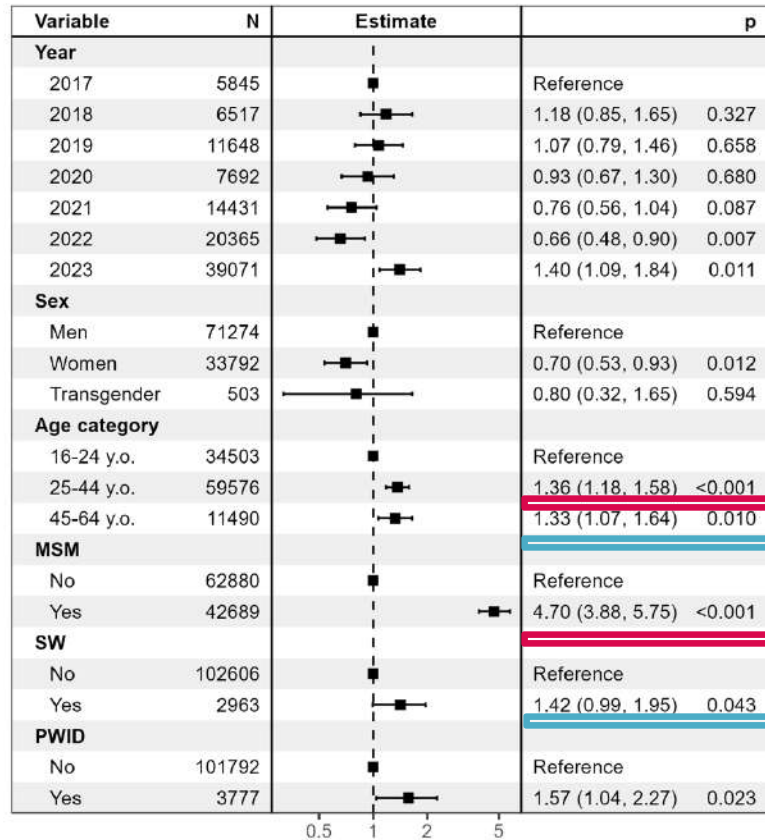
2022 - 2023 ∇ 18.0%

Prevalence of HIV positive diagnosis in the disaggregated data* stratified by origin status: Multivariable analysis

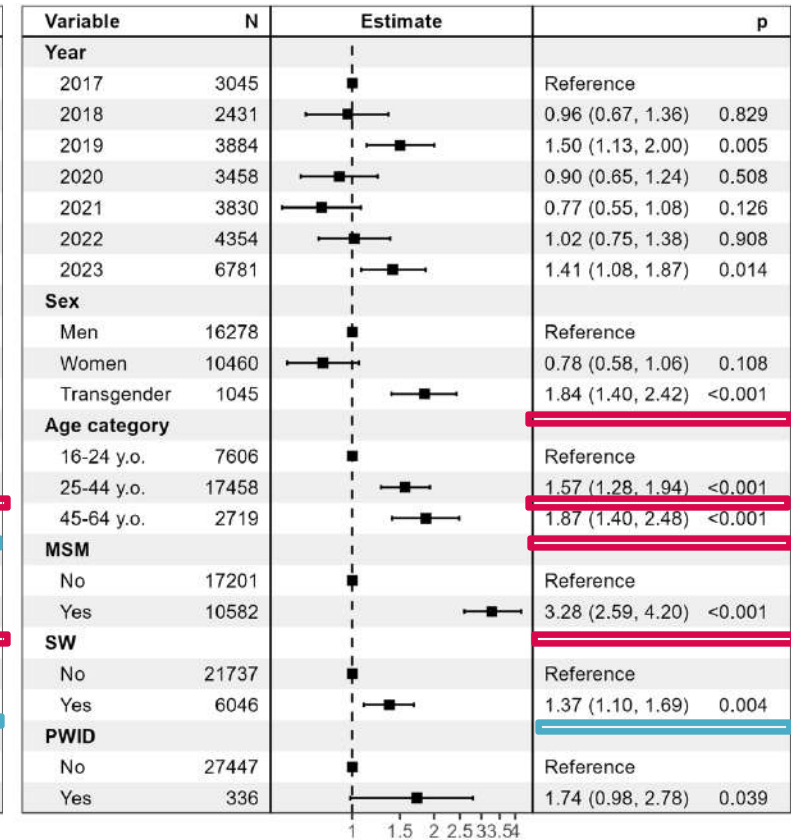
Total disaggregated sample



Native-born



Immigrants



Conclusions

Immigrants compared
with Native-born

Significantly high PR

Immigrants tested
across 7 years

Steady % increase in
testing (lower %
increase compared to
native-born)

Consistent %
increase in HIV-
positive diagnoses

Immigrant
characteristics
(HIV-positive diagnosis)

Significantly high
PR among
transgender
immigrants

Significantly high
PR among MSM

Significantly high
PR among older
(>25) immigrant
population

Key Takeaways

- Immigrants are disproportionately affected by HIV compared to the native-born population
- Urgent need for targeted interventions and improved access to HIV testing and care is needed
- Further research into the causes of disparity between immigrants and native-born populations is needed

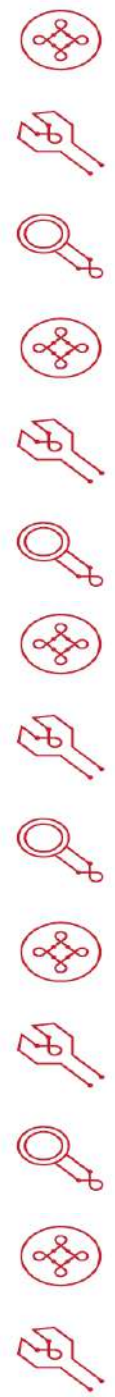




COBATEST
NETWORK



COBATEST Team at CEEISCAT



COBATEST
NETWORK

Thank you!